

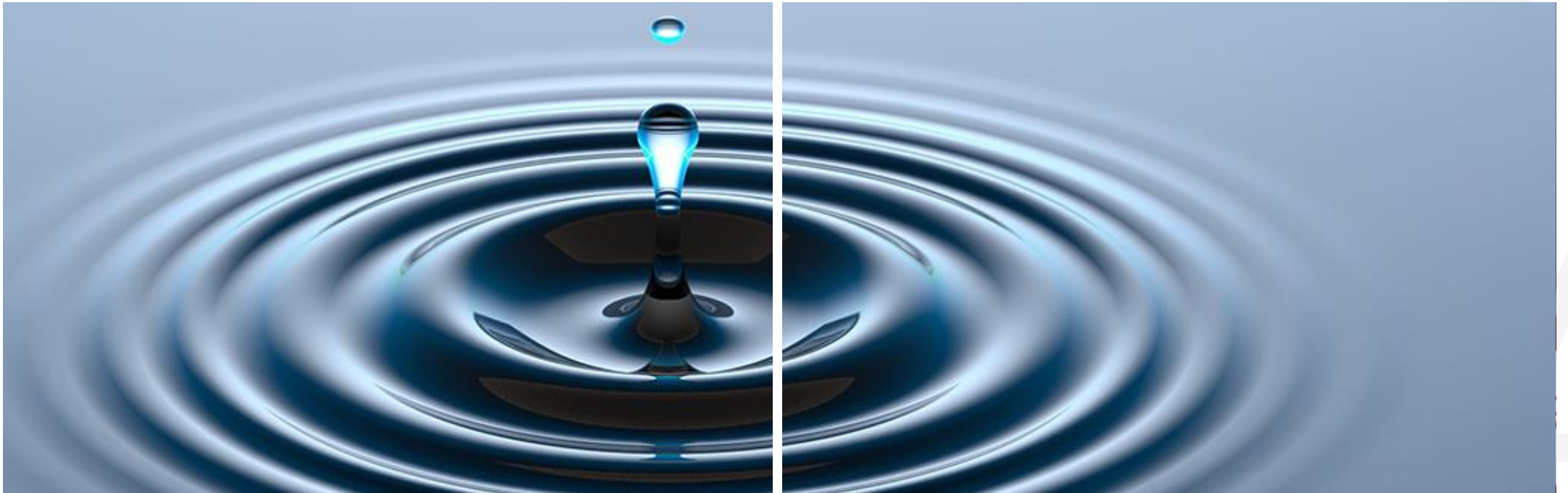


CAPE TOWN

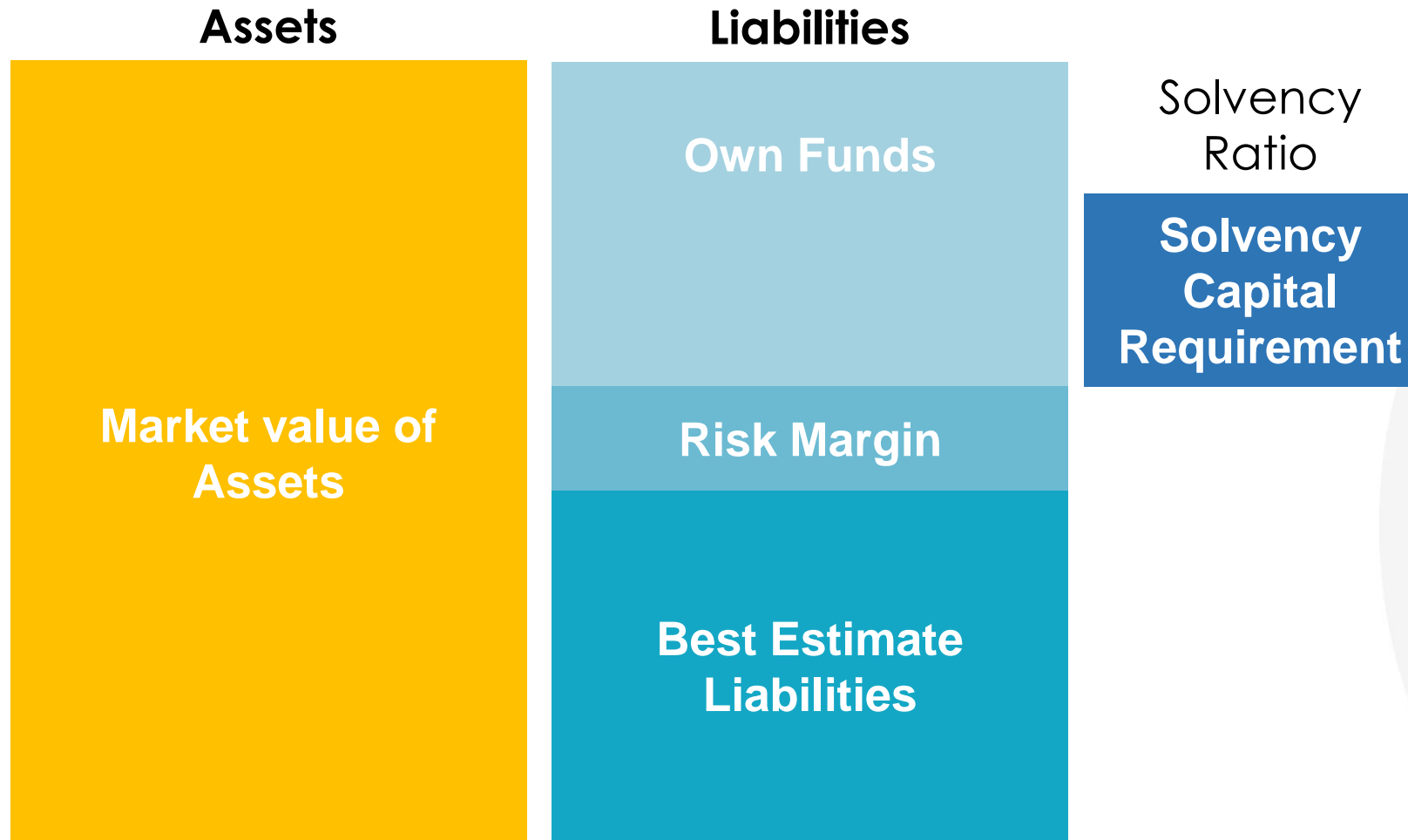
24 - 25 October 2018

THE RIPPLE EFFECT OF SOLVENCY II: THREE YEARS IN

Colin Dutkiewicz



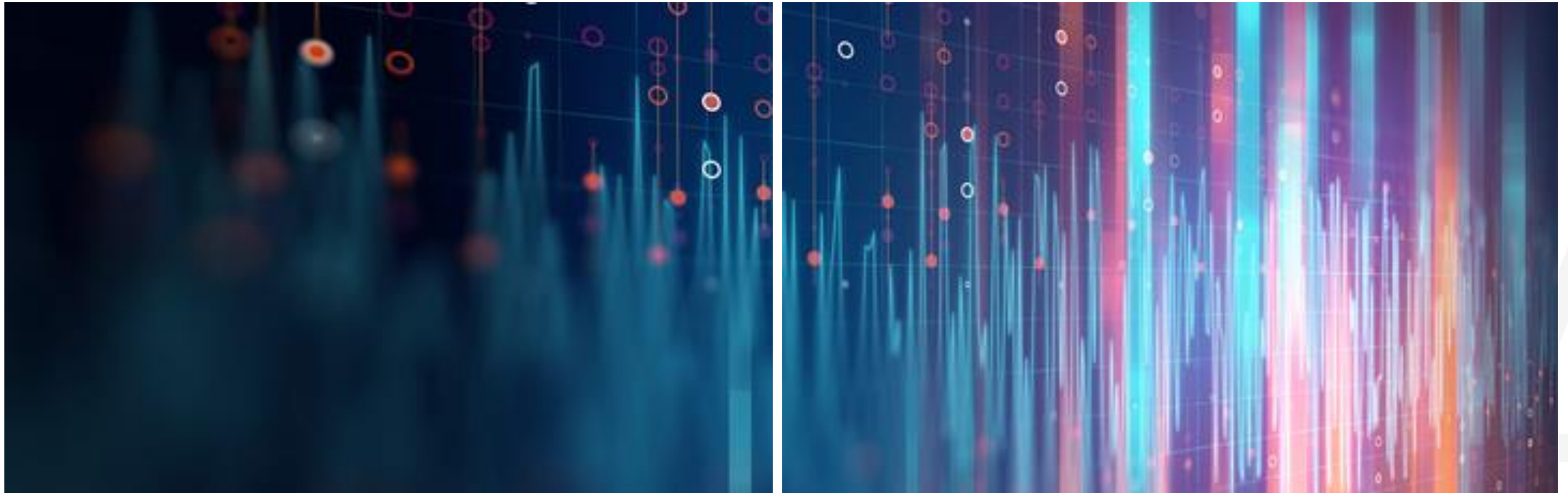
Solvency II Implementation 1 January 2016



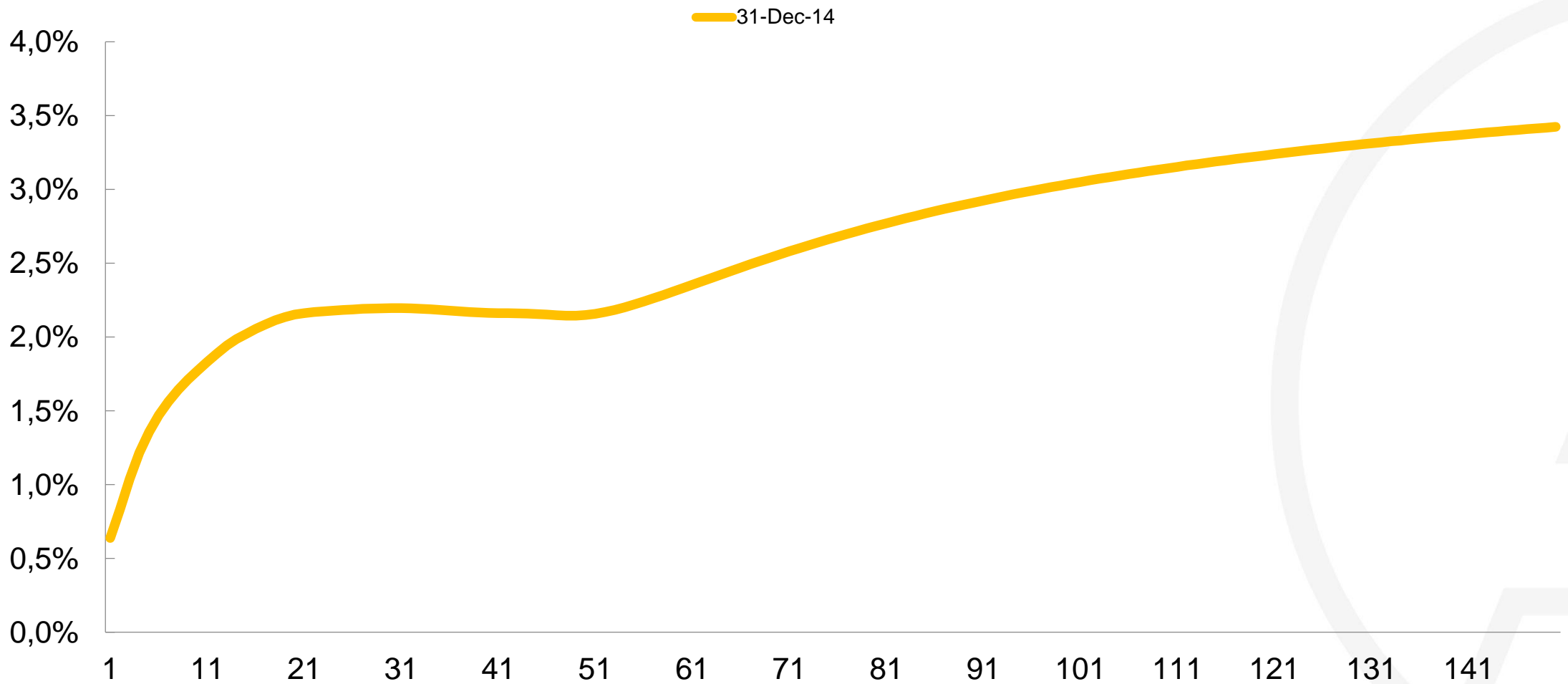


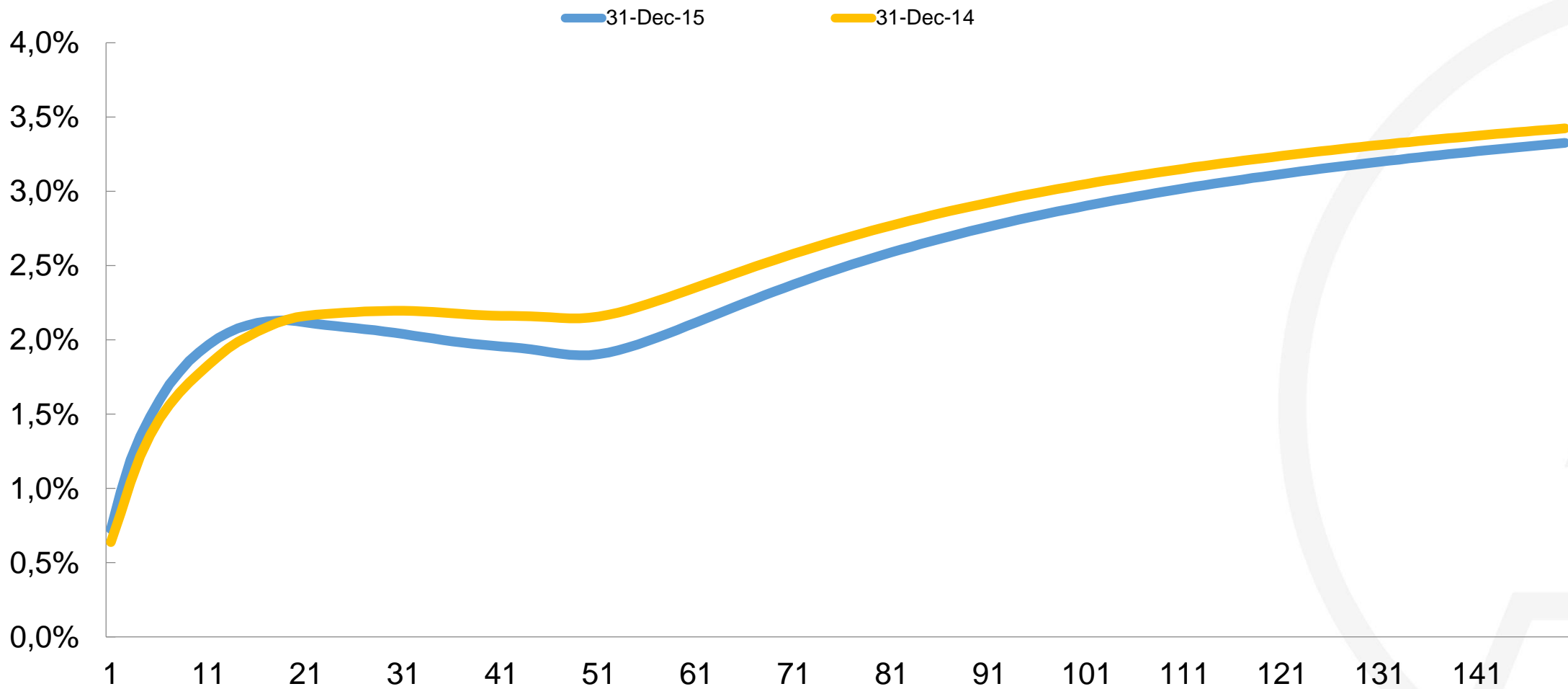
Protecting against the 1/200 year events

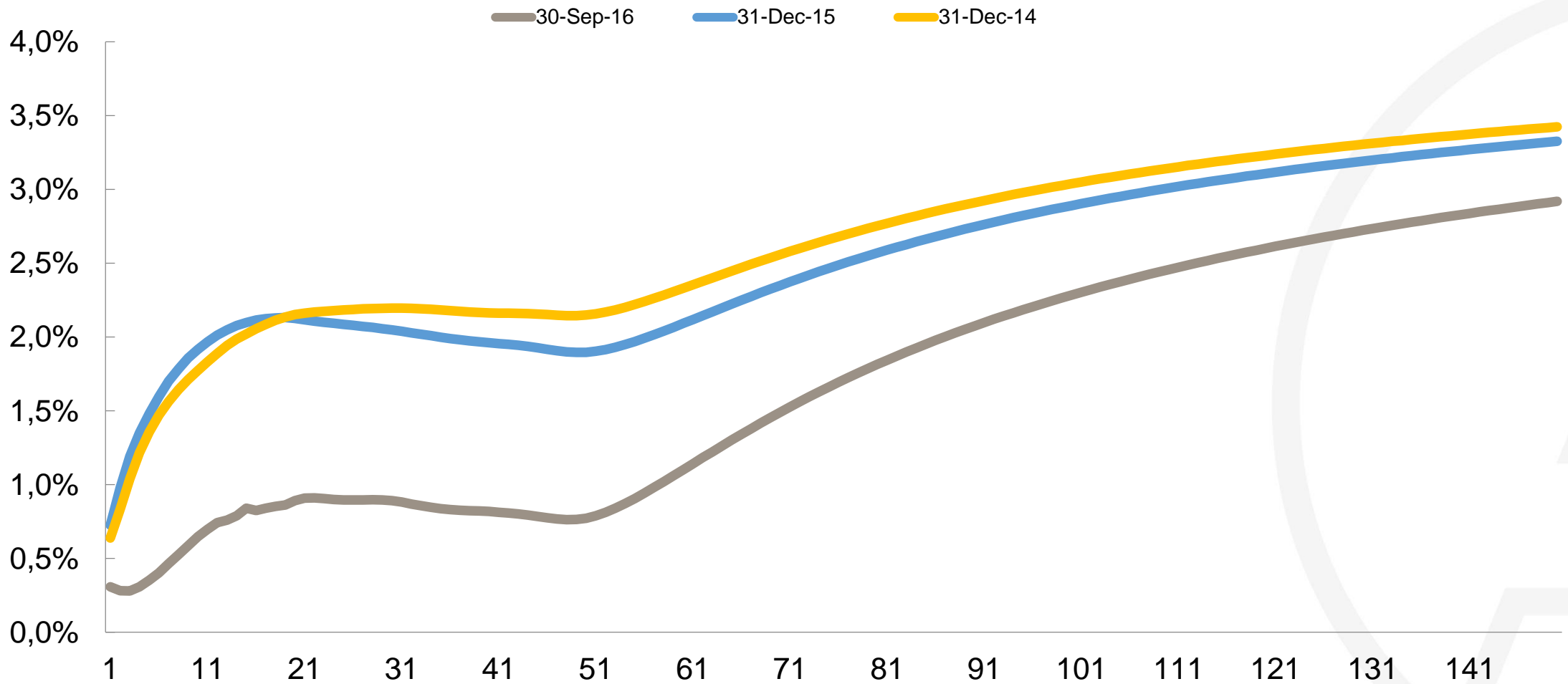
04 The 'Best' Estimate Liability (BEL)

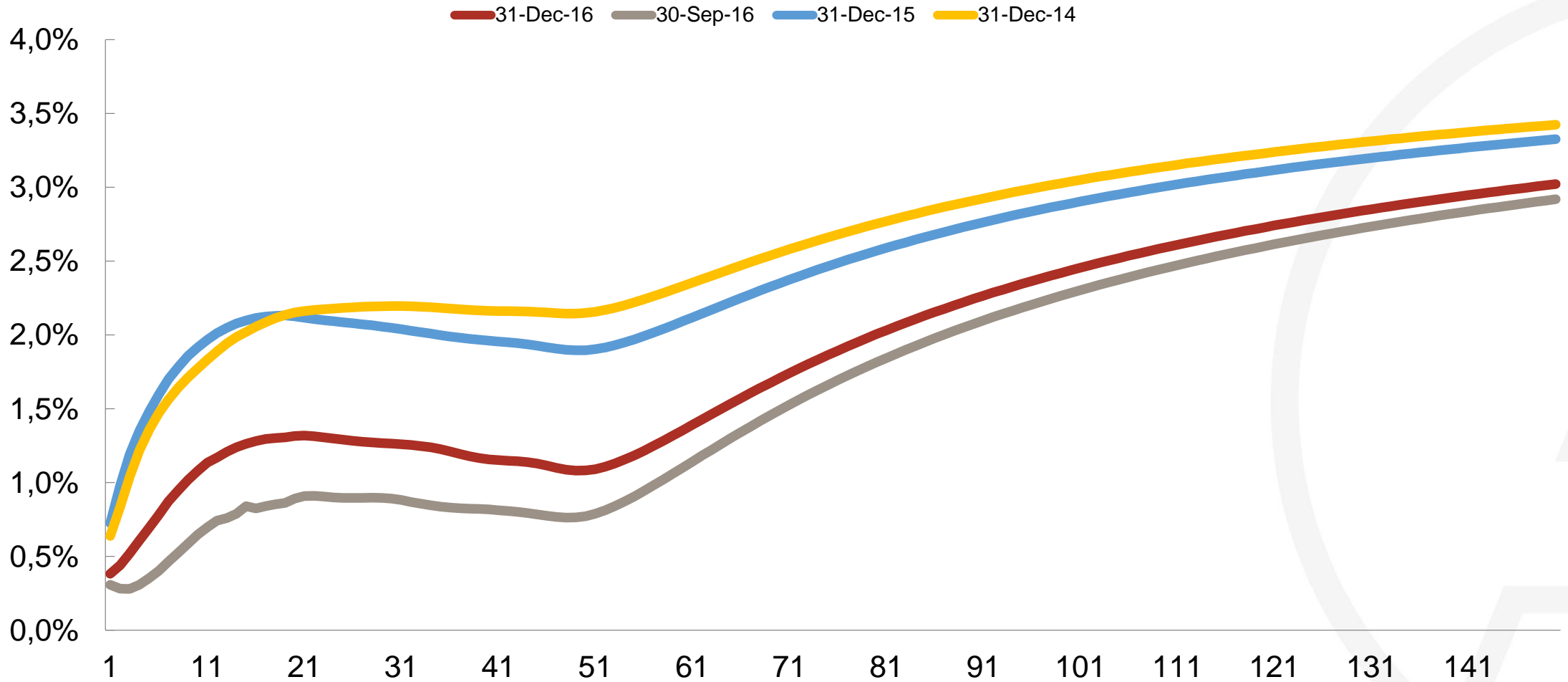


Is the Best Estimate Liability a useful number?



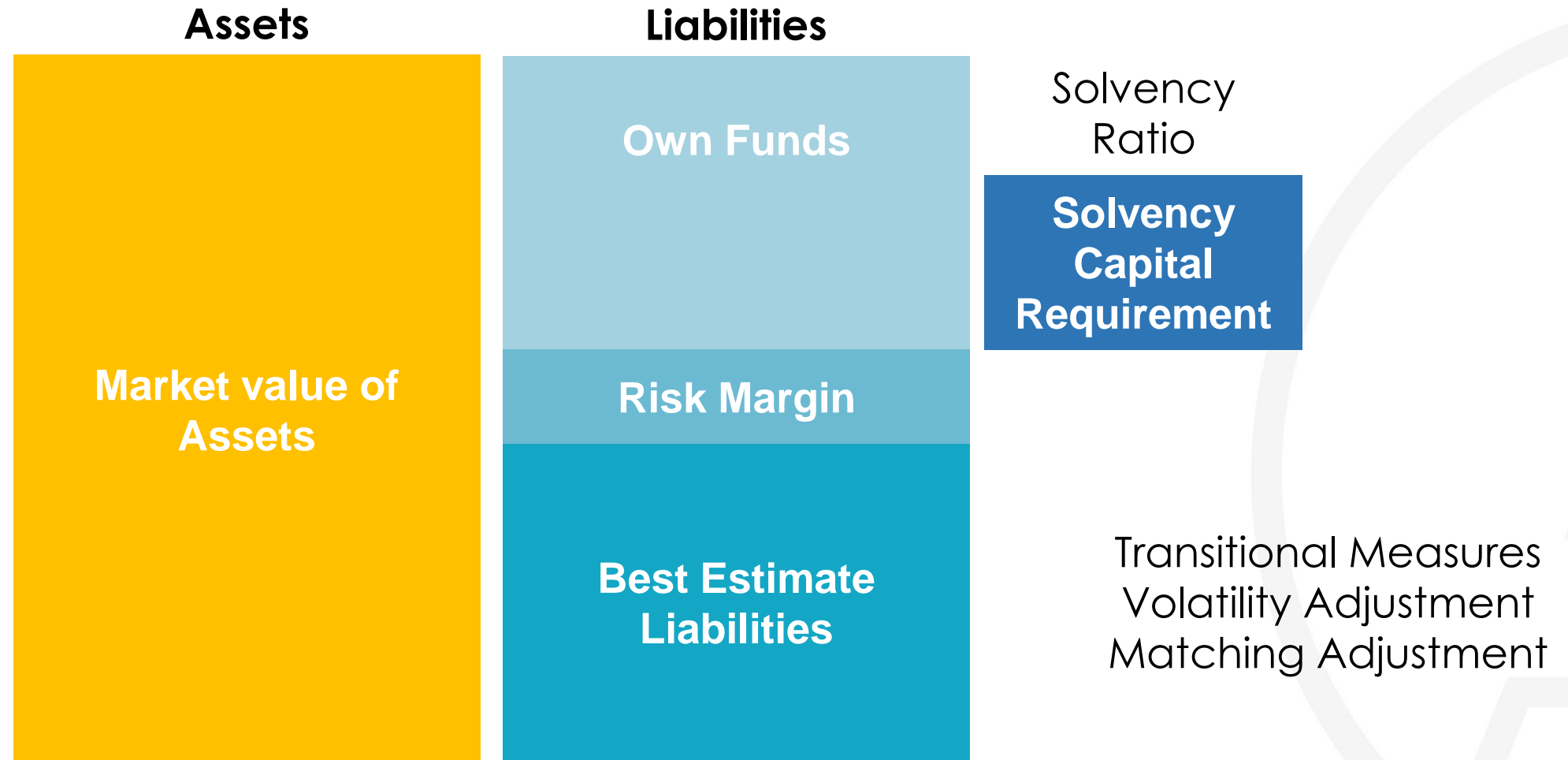


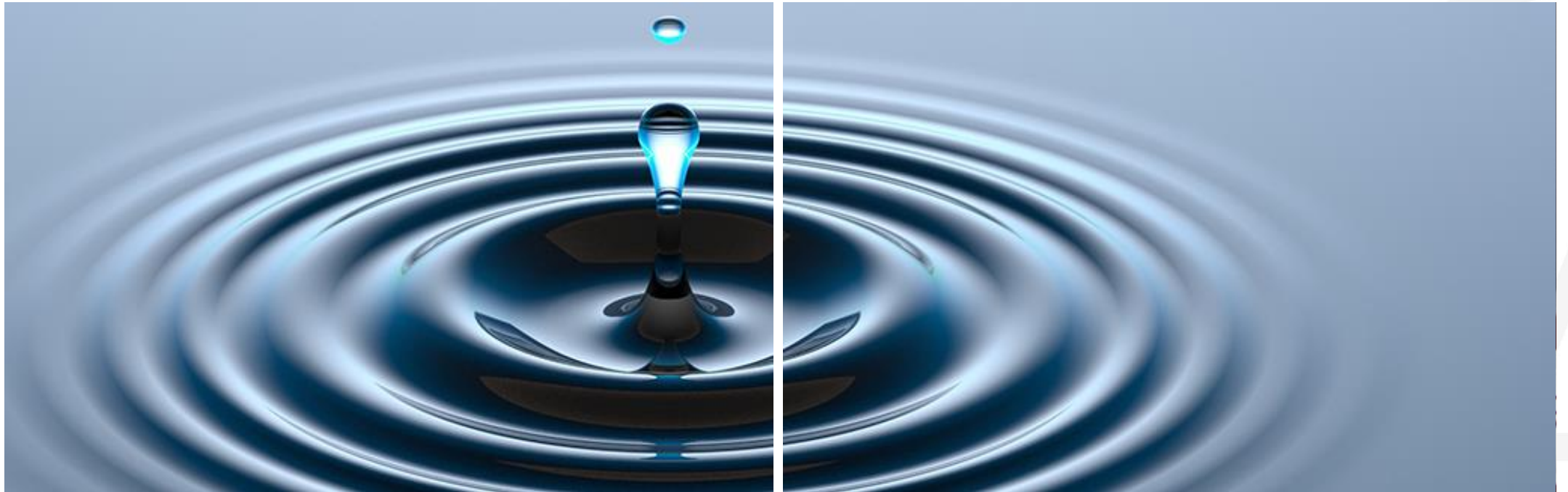






How much would a willing buyer pay for a portfolio of risk?





The next wave of disruption ...